

Current Chinchilla Guide Standard

They are currently monitored under the RVCC and are shown in Guide Standard classes.

Head, Eyes & Ears Head to be short and broad, with a gently curving profile. Muzzle to be of good width and gently rounded at the nostrils. Eyes to be large, bright and bold and set with good width between. Ears to be large and drooping, with lower rim parallel to the ground & set with good width between.

Body Shape To have short, cobby body with deep, broad shoulders. To be fit and of good substance, with plenty of firm flesh. To have good size appropriate to age.

Body Colour The Body colour is created by individual hairs consisting of:
(1) a base colour that is wider and paler nearest to the skin, followed by
(2) a band of darker base colour;
(3) a white or cream band narrower than the two bands of base colour;
(4) a very small tip of dark base colour.

The desired hair characteristics should give Body Colour consisting of a muted pastel shade and an even, long-ticked appearance. Belly should be white or cream with no base colour showing through. Base colour should be paler than on the corresponding Agouti without losing clarity of markings and the desired pigmentation of eyes, ears and pads.

Markings To have pronounced and clearly defined white or cream markings as eye circles; around the nostril area; on the jowls, chest, belly and an area around the forelimbs extending from the belly. Belly should be wide enough that it is just visible when viewed from the side. Feet to be ticked and should match the body colour. **Coat** To be soft & silky, clean and short, groomed free of guard hairs.

SPECIFIC FAULTS: Too dark a shade of body colour. Patches of solid white or cream hairs, except where specified. Uneven ticking. Inappropriate toenail pigmentation.

DESCRIPTION OF COLOURS:

Silver (White/Grey) – Medium grey base with a darker band, then a white band with darker (grey) tipping. White markings. Eyes dark with a hint of ruby. Ears and Pads grey.

Lemon (Cream/Grey) – Medium grey base with a darker band, then a cream band with darker (grey) tipping. Cream markings. Eyes dark with a hint of ruby. Ears and Pads grey.

Cinnamon (White/Chocolate) – Light chocolate base with a darker band, then a white band with darker (chocolate) tipping. White markings. Eyes ruby. Ears and Pads pink/light chocolate.

Cream (Cream/Chocolate) – Light chocolate base with a darker band, then a cream band with darker (chocolate) tipping. Cream markings. Eyes ruby. Ears and Pads pink /light chocolate.

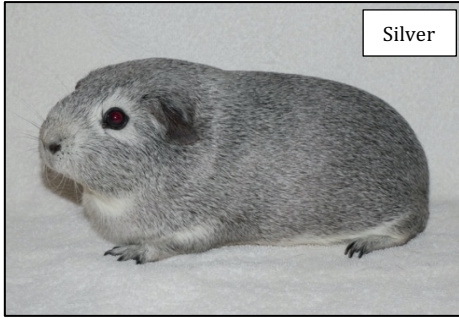
GUIDANCE NOTES: U/5 exhibits should be paler in colour than adult exhibits, but must still retain the markings described. This should not be unduly penalized since it may well clear as the cavy matures. Size is very desirable, but not at the expense of quality or cobyness. Grooming is essential to produce the effect of even long-ticking on the body and sides of the cavy.

Current Chinchilla Exhibitors & Breeders:

Clare & David Allen-Holmes – Zebedee Cavies
Sue Ford – Kingate Cavies
Kelly Rider – Lovelace Cavies
Lisa Dunning – Ashwater Cavies
Lewis Seaman – Lotus Cavies
Rachael Stanley – Lothingland Cavies
Claire Waite – Wispa Cavies
Bev Burrell – Pengay Pigs
Amy Bond – Amy Bond's Cavies
Rose Bridge – Dryad Cavies
Louise Holland – Ridgebrook Cavies
Libby Holland (Junior) – Brookridge Cavies



THE CHINCHILLA



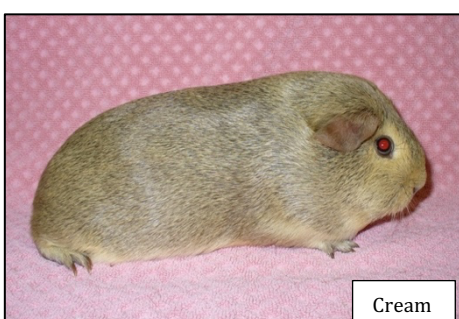
Silver



Lemon



Cinnamon



Cream

